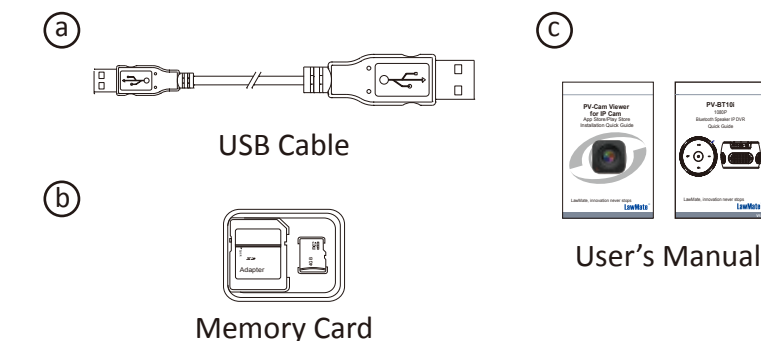


## 2. Package Content



- \*Warranty will be void if the serial number sticker is tampered.
- ### 3. Operation
- #### 3.1 Bluetooth Speaker
- 3.1.1 Switch ⑮ to “BT” and long press ③ to turn on the power.
  - 3.1.2 When the device is turned on, the blinking blue LED shows that the speaker is ready to be paired with mobile device. Go to your mobile device and turn on the Bluetooth.
- You will find the name “PV-BT10i” on your mobile device and you can pair your mobile device to the speaker.

1

2

### 3. Operation

### 3.1 Bluetooth Speaker

- 3.1.1 Switch **(15)** to “BT” and long press **(3)** to turn on the power.
- 3.1.2 When the device is turned on, the blinking blue LED shows that the speaker is ready to be paired with mobile device. Go to your mobile device and turn on the Bluetooth.
- You will find the name “PV-BT10i” on your mobile device and you can pair your mobile device to the speaker.

### 3.2 DVR function







- 3.2.1 Switch **(15)** to the right “V” (means video) and long press **(3)** .  
After 40 seconds of system initialization, the DVR will be on.
- 3.2.2 When the DVR is turned on, the blinking orange LED shows that the DVR is ready for IP connection.  
For more Wi-Fi / IP connection instruction, please refer to PV Cam Viewer Quick Guide for more

3

- 3.2.3 To disable the DVR LED indicator, please switch ⑪ to “OFF”.

※ If the speaker is not connected to any device, it will power off after 3 minutes of idle.

#### 4. LED Indicator

- Blinking blue LED  - Bluetooth speaker is ready to be paired with mobile device.
- Solid blue LED  - Power on.
- Solid red LED  - Recording on.
- Blinking orange LED  - Searching for Wi-Fi connection.
- Solid orange LED  - Device connected to phone (P2P connected)
- Solid green LED  - Device connected to the router (IP connected)

## 5. Date and Time Setting

Go to the “Program Setting” on the PV Cam Viewer App to change the date and time setting.

## 6. Recording Mode

Go to “Recorder Setting” on the PV Cam Viewer App to change the recording mode to continuous recording or motion detection recording.

4

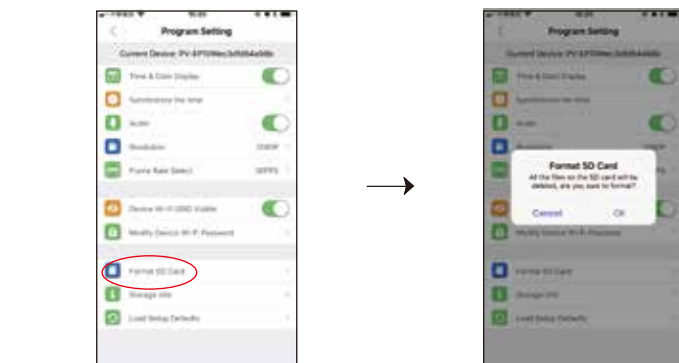
## 7. Charging the Battery



Connect the micro USB end of the cable to ⑫ and connect the other end to an USB power source (as shown above), or plug it to a power bank of your own choice. When device is charging, the green LED will stay on. When charged to its full capacity, the green LED will go off.

## 8. Format Memory Card

- ### 8.1 Go to program setting on the PV Cam Viewer App



## 9. Download Videos to PC

Remove the memory card from the device. Insert it into a memory card reader and connect with PC. The memory card will appear on your PC for you to view and download video files.

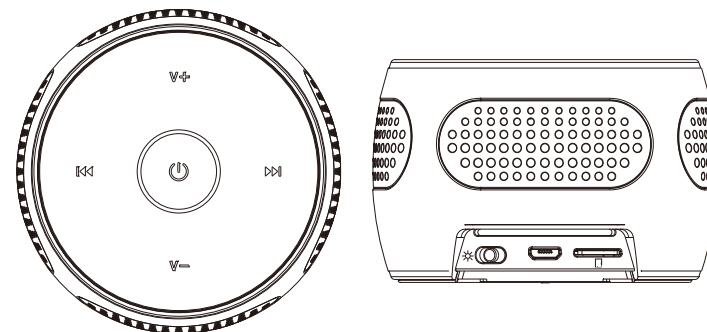
## 10. Specification

Built-in Camera Module	
Built-in Image Sensor	1/2.9" progressive CMOS sensor
Sensor Resolution	2000x1121
Sensor Sensitivity	0.1 Lux @ F 2.0
Lens F/No.	F 2.0
Focal Length	3.64
Angle of View	78°
Video Spec.	
Algorithm	H.264, JPEG
File Format	MOV, JPG
Video Recording Mode	Auto / Manual / Motion Detection
Recording Capability	1920x1080, 1280x720, 848x480
Frame Rate	Up to 30 fps
Photo Capability	2M (1600x1200)
Wi-Fi	
Wi-Fi	Built-in Wi-Fi Module
Storage & I/O	
Memory Type	Micro SD Card (Support SDHC max. 32GB)
Data Interface	Card Reader
Misc.	
Date/Time Table	YYYY/MM/DD, HH:MM:SS
Snapshot	Recording and playback video
Power	
Power Input	DC 5V
Power Consumption	480mA-530mA (Wi-Fi ON) + BT+ (20 - 380mA)
Battery Input	DC 3.7V / 1400mA polymers battery (XK504355)
Charging Time	180min (560mA)
Battery Lifetime	150min (1080P) BT OFF
	165min (720P) BT OFF
	180min (WVGA) BT OFF
Recording Time	500min @ 1920x1080 resolution (16GB SD card)
Physical	
Dimension	86x86x54 (mm)
Weight	345g

7

# PV-BT10i

# 1080p Bluetooth Speaker IP DVR Quick Guide



LawMate, innovation never stops

**LawMate®**

V1.1